

CHANNEL ACCESSORIES

HANGER SUPPORTS

1 CABLE TRAY/
ACCESSORIES

2 CABLE LADDER/
ACCESSORIES

3 CHANNEL/
ACCESSORIES

4 FASTENERS

QPC-PURLIN CLIP



Max Design Load 1kN

6Kg/100

PERLIN CLIP ORDERING INFORMATION

1 PRODUCT CODE	2 SIZE	3 FINISH
QPC	8	8mm
	10	10mm
	12	12mm

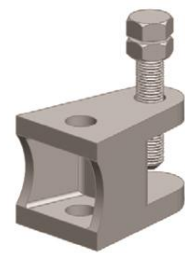
EXAMPLE **1 2 3**
QPC12Z QPC 12 Z

BEAM CLAMP ORDERING INFORMATION

1 PRODUCT CODE	2 SIZE	3 FINISH
QBC	8	8mm
	10	10mm
	12	12mm

EXAMPLE **1 2 3**
QBC8H QBC 8 H

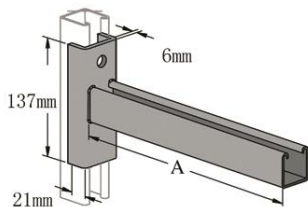
QBC - BEAM CLAMP



Design Load 1.5kN

18Kg/100

CCB(BRACED)



CCB (FLAT) ORDERING INFORMATION

1 PRODUCT CODE	2 FINISH	UNIFORM LOAD kN	MASS Kg
CCB200	200mm	H Hot Dip Galv.	3.9 0.82
CCB350	350mm	S Stainless	2.1 1.25
CCB500	500mm	ZP Zinc Passivated	1.7 1.69
CCB660	660mm	PC Powder Coated	1.3 2.15
CCB780	780mm		1.2 2.55

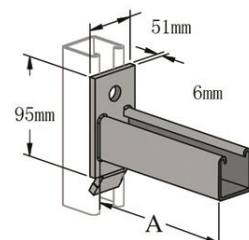
EXAMPLE **1 2**
CCB780ZP CCB780 ZP

CCI (FLAT) ORDERING INFORMATION

1 PRODUCT CODE	2 FINISH	UNIFORM LOAD kN	MASS Kg
CCI200	200mm	H Hot Dip Galv.	3.5 0.82
CCI350	350mm	S Stainless	1.7 1.25
CCI500	500mm	ZP Zinc Passivated	1.3 1.69
CCI660	660mm	PC Powder Coated	0.9 2.15
CCI780	780mm		0.8 2.55

EXAMPLE **1 2**
CCI780ZP CCI780 ZP

CLB (BRACED)



CHANNEL ACCESSORIES

CANTILEVER BRACKETS

1 CABLE TRAY / ACCESSORIES

2 CABLE LADDER / ACCESSORIES

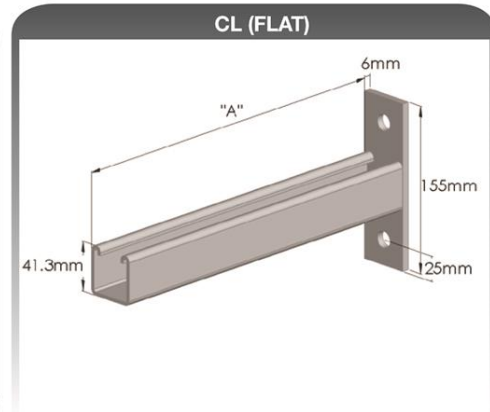
3 CHANNEL / ACCESSORIES

4 FASTENERS

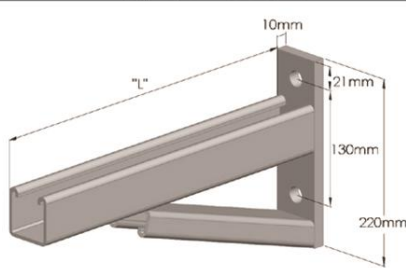
CL (FLAT) ORDERING INFORMATION

1	PRODUCT CODE	2	FINISH	UNIFORM LOAD kN	MASS Kg
CL200	200mm	H	Hot Dip Galv.	3.7	0.82
CL350	350mm	S	Stainless	1.9	1.25
CL500	500mm	ZP	Zinc Passivated	1.5	1.69
CL660	660mm	PC	Powder Coated	1.1	2.15
CL780	780mm			1.0	2.55

EXAMPLE 1 2
CL780ZP CL780 ZP



QLB(BRACED) ORDERING INFORMATION



QLB(BRACED) ORDERING INFORMATION

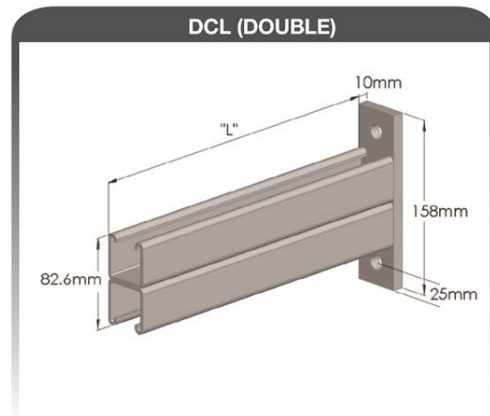
1	PRODUCT CODE	2	FINISH	UNIFORM LOAD kN	MASS Kg
QLB350	350mm	H	Hot Dip Galv.	4.35	1.85
QLB500	500mm	S	Stainless	3.05	2.44
QLB660	660mm	ZP	Zinc Passivated	3.20	3.56
QLB780	780mm	PC	Powder Coated	2.75	3.80

EXAMPLE 1 2
QLB780H QLB780 H

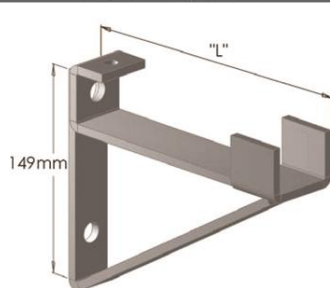
DCL (DOUBLE) ORDERING INFORMATION

1	PRODUCT CODE	2	FINISH	UNIFORM LOAD kN	MASS Kg
DCL350	350mm	H	Hot Dip Galv.	3.7	2.61
DCL500	500mm	S	Stainless	1.9	3.75
DCL660	660mm	ZP	Zinc Passivated	1.5	4.32
DCL780	780mm	PC	Powder Coated	1.1	4.99
DCL915	915mm			1.0	5.74

EXAMPLE 1 2
DCL350H DCL350 H



Q1075-Q1075A ORDERING INFORMATION



Q1075-Q1075A ORDERING INFORMATION

1	PRODUCT CODE	2	FINISH	UNIFORM LOAD kN	MASS Kg
Q1075	121mm	H	Hot Dip Galv.	0.57	0.76
Q1075A	197mm	S	Stainless	0.57	1.24
		ZP	Zinc Passivated		
		PC	Powder Coated		

EXAMPLE 1 2
Q1075AH Q1075A H