



Stainless Steel
Conduit and Accessories

Bond Stainless Steel Conduit System



THE COMPLETE STAINLESS STEEL THREADED CONDUIT SYSTEM

Electrical conduit is manufactured in high quality 316 grade stainless steel, offering the best combination of resistance to corrosion and mechanical protection at a realistic price. It is ideal for most hostile environments and meets the high specifications required for sterile production areas.

Available in three sizes, it forms the basis of the comprehensive Kwok Bond Stainless Steel Conduit System.

- Manufactured in Stainless Steel 316.
- Ground Finish.
- Easy to thread and bend.
- Complete range of sizes.

Product Range

Stainless Steel Conduit
Flexible Conduit
IP66 Bore Boxes
Large IP66 Bore Boxes
Distance Saddles
Deep Type Saddles
Manion Rings
Male & Female Bushes
Lock Nuts & Lock Rings
Reducers, Elbows
Male & Female Bends
Plain & Flanged Couplings
Cable Glands
Adaptable Boxes
Enclosures

Stainless Steel Conduit System



THE COMPLETE STAINLESS STEEL THREADED CONDUIT SYSTEM

SPECIFICATION *(All metric threads are ISO 1.5)*

KCD

- Conduit Tube

Available in 16mm, 25mm, 40mm (1½") & 50mm (2") diameter in
3m lengths.

Dia.	Wall	Length
20	1.5	3000
25	1.5	3000
32	1.5	3000

Sizes in millimetres unless otherwise stated.

Stainless Steel Conduit System



STAINLESS STEEL BENDS, ELBOWS & DOME LIDS

Elbows and Dome Lids form an integral part of our comprehensive Stainless Steel Conduit System.

All our products are manufactured in stainless steel 316 giving maximum resistance at a realistic price. In each of our components we maintain our commitment to high quality design and manufacturing, producing the best products that consistently perform in the most hostile environments.

- * Manufactured in Stainless Steel 316.
- * Electro Chemical Finish.
- * Complete range of sizes.

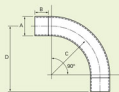
Product Range

Stainless Steel Conduit
Flexible Conduit
IP66 Box Boxes
Large IP66 Box Boxes
Distance Saddles
Deep Type Saddles
Manhole Rings
Male & Female Bushes
Lock Nuts & Lock Rings
Reducers, Elbows
Male & Female Bends
Plain & Flanged Couplings
Cable Glands
Adaptable Boxes
Enclosures

Stainless Steel Conduit System

STAINLESS STEEL BENDS, ELBOWS & DOME LIDS

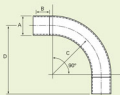
SPECIFICATION *(All metric threads are ISO 1.5)*



– Male Bend 90°

A	B	C	D
20	14	50	210
25	17	62.5	270
32	19	80	370

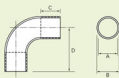
Size in millimetres unless otherwise stated.



– Female Bend 90°

A	B	C	D
20	17	50	210
25	20	62.5	270
32	22	80	370

Size in millimetres unless otherwise stated.



– 90° Elbow

90°

A	B	C	D
20	23	20	45

Size in millimetres unless otherwise stated.



– 45° Elbow

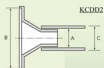
45°

A	B	C
20	23	20

Size in millimetres unless otherwise stated.



KCDD1



KCDD2

– Dome Lid

	A	B	C
KCDD1	20	62	–
KCDD2	20	62	25

Size in millimetres unless otherwise stated.

Stainless Steel Conduit System



STAINLESS STEEL SADDLES & MUNSON RINGS

Saddles and Munson Rings form an integral part of our comprehensive Stainless Steel Conduit System.

They offer secure fixing and support to our full range of conduits. As with all Kwok Bond products they are designed and manufactured to the highest specification in stainless steel 316.

Their design and finish ensures easy cleaning.

- Manufactured in Stainless Steel 316.
- Electro Chemical Finish.
- Complete range of sizes.
- Smooth shape for easy cleaning.



Product Range

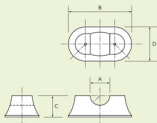
Stainless Steel Conduit
Flexible Conduit
IP66 Resin Boxes
Large IP66 Resin Boxes
Distance Saddles
Deep Type Saddles
Munson Rings
Male & Female Bushes
Lock Nuts & Lock Rings
Reducers, Elbows
Male & Female Bends
Plain & Flanged Couplings
Cable Glands
Adaptable Boxes
Enclosures

Stainless Steel Conduit System



STAINLESS STEEL SADDLES & MUNSON RINGS

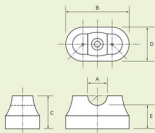
SPECIFICATION (All metric threads are ISO 1.5)



– Distance Saddle

A	B		D
20	65	22	30
25	70	25	30
32	76	28	30

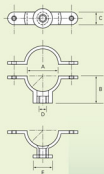
Sizes in millimetres unless otherwise stated.



– Deep Type Saddle

A	B		D	E
20	65	34	30	24
25	70	36.5	30	24
32	76	40	30	24

Sizes in Millimetres unless otherwise stated.



– Munson Ring (Single End)

– Munson Ring (Double End)

A	B		D	E
20	22	13	6	20
25	24.5	13	6	20
32	28	13	6	20

Sizes in Millimetres unless otherwise stated.

Stainless Steel Conduit System

STAINLESS STEEL IP66 BESA BOXES

Standard Besa Box forms an integral part of our comprehensive Stainless Steel Conduit System.

Offering eight different box configurations in three sizes this extensive range covers all situations and applications.

Designed to a high specification and manufactured in stainless steel 316, our Besa Boxes will withstand all the rigours of hostile environments and high pressure washdowns.

Continuous development and additions ensure that our range of Besa boxes fulfil all requirements.

- Manufactured in Stainless Steel 316.
- Electro Chemical Finish.
- Pressure Tested.
- IP66 Tested (Dust & Water Tight).

Product Range

Stainless Steel Conduit
Flexible Conduit
IP66 Besa Boxes
Large IP66 Besa Boxes
Distance Saddles
Deep Type Saddles
Manion Rings
Male & Female Bushes
Lock Nuts & Lock Rings
Reducers, Elbows
Male & Female Bends
Plain & Flanged Couplings
Cable Glands
Adaptable Boxes
Enclosures



Stainless Steel Conduit System



STAINLESS STEEL IP66 BESA BOXES

SPECIFICATION *(All metric threads are ISO 1.5)*

KCDBE/6

- Single or Stop End



KCDBS/6

- Through



KCDBE/6, KCDBS/6, KCDBA/6, KCDBT/6, KCDBC/6, KCDBU/6, KCDBY/6, KCDBH/6

- IP66 Besa Boxes

All Boxes supplied with Lid & Gasket

A	B	C	D	E
20	60.3	18	32	51.5
25	60.3	20	38	54.5

Size in millimetres unless otherwise stated

KCDBA/6

- Angle



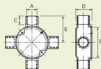
KCDBT/6

- Three Way or Tee



KCDBC/6

- Four Way or Intersection



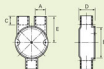
KCDBU/6 (20mm size only)

- Branch Two Way or U



KCDBY/6 (20mm size only)

- Branch Three Way or Y



KCDBH/6 (20mm size only)

- Twin Through Way or H



Stainless Steel Conduit System

STAINLESS STEEL LARGE IP66 BESA BOXES

The Large Besa Box is a welcome addition to our comprehensive Stainless Steel Conduit System.

At 81mm diameter and 40mm deep the large Besa Box offers a greater capacity, giving more flexibility of use and easier fixing.

Designed to a high specification and manufactured in stainless steel 316, our Large Besa Boxes will withstand all the rigours of hostile environments and high pressure washdowns.

- Manufactured in Stainless Steel 316.
- Electro Chemical Finish.
- Pressure Tested.
- IP66 Tested (Dust & Water Tight).
- Complete range of sizes.

Product Range

Stainless Steel Conduit
Flexible Conduit
IP66 Besa Boxes
Large IP66 Besa Boxes
Distance Saddles
Deep Type Saddles
Monson Rings
Male & Female Bushes
Lock Nuts & Lock Rings
Reducers, Elbows
Male & Female Bends
Plain & Flanged Couplings
Cable Glands
Adaptable Boxes
Enclosures



Stainless Steel Conduit System

STAINLESS STEEL LARGE IP66 BESA BOXES

SPECIFICATION *(All metric threads are ISO 1.5)*

KCDBE/3

- Single or Stop End



KCDBS/3

- Through



KCDBE/3, KCDBS/3, KCDBA/3, KCDBT/3, KCDBC/3, KCDBU/3, KCDBY/3, KCDBH/3

- Large IP66 Besa Boxes

All Boxes supplied with Lid & Gasket

A	B	C	D	E
20	81	18	40	63
25	81	20	40	66
32	81	22	40	67

Sizes in millimetres unless otherwise stated.

KCDBA/3

- Angle



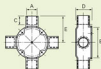
KCDBT/3

- Three Way or Tee



KCDBC/3

- Four Way or Intersection



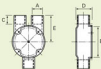
KCDBU/3

(25mm size only)
- Branch Two Way or U



KCDBY/3 *(25mm size only)*

- Branch Three Way or Y



KCDBH/3 *(25mm size only)*

- Twin Through Way or H



Stainless Steel Conduit System



STAINLESS STEEL LOCK NUTS, LOCK RINGS, NIPLING, STOP PLUGS & REDUCERS

All components are designed and manufactured to the highest Specification in stainless steel 316.

They form an integral part of our comprehensive Stainless Steel Conduit System.

This knowledge ensures that our customers receive the best products combined with technical back-up and the capacity to solve any on-site problems.

- Manufactured in Stainless Steel 316.
- Electro Chemical Finish.
- Complete range of sizes.

Product Range

Stainless Steel Conduit
Flexible Conduit
IP66 Rese Boxes
Large IP66 Rese Boxes
Distance Saddles
Deep Type Saddles
Monson Rings
Male & Female Bushes
Lock Nuts & Lock Rings
Reducers, Elbows
Male & Female Bends
Plain & Flanged Couplings
Cable Glands
Adaptable Boxes
Enclosures

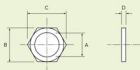


Stainless Steel Conduit System



STAINLESS STEEL LOCK NUTS, LOCK RINGS, NIPLING, STOP PLUGS & REDUCERS

SPECIFICATION (All metric threads are ISO 1.5)



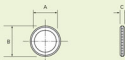
KCDLN

- Lock Nut

(1½" & 2" also available)

A	B	C	D
20	28	32	3.5
25	30	35	4
32	38	43	5

Sizes in millimetres unless otherwise stated.



KCDLB

- Lock Ring

(1½" & 2" also available)

A	B	C
20	25	3.5
25	32	3.5
32	42	4

Sizes in millimetres unless otherwise stated.



KCDN

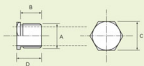
- Nipling

A	B
20	40 or 100
25	40 or 100

Sizes in millimetres unless otherwise stated.

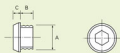
KCDPH

- Hex



KCDPD

- Dome

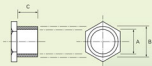


KCDPH, KCDPD

- Stop Plug

	A	B	C	D
KCDPH	20	17	23.4	20.3
	25	17	27.9	21.1
	32	17	37.6	21.2
KCDPD	20	10	6	
	25	11	6	
	32	12	6	

Sizes in millimetres unless otherwise stated.



KCDSR

- Reducer

A	B	C
20	25	17
20	32	20
25	32	20

Sizes in millimetres unless otherwise stated.

Stainless Steel Conduit System

STAINLESS STEEL COUPLINGS, FLANGED COUPLINGS, MALE BUSHES & FEMALE BUSHES

Couplings and Bushes form an integral part of our comprehensive Stainless Steel Conduit System.

Our commitment to quality and development ensure that our customers receive the best products backed by our extensive technical expertise.

- Manufactured in Stainless Steel 316.
- Electro Chemical Finish.
- Full range of sizes.
- Complete range of sizes.

Product Range

Stainless Steel Conduit
Flexible Conduit
IP66 Rese Boxes
Large IP66 Rese Boxes
Distance Saddles
Deep Type Saddles
Manion Rings
Male & Female Bushes
Lock Nuts & Lock Rings
Reducers, Elbows
Male & Female Bends
Plain & Flanged Couplings
Cable Glands
Adaptable Boxes
Enclosures

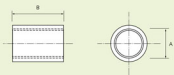


Stainless Steel Conduit System



STAINLESS STEEL COUPLINGS, FLANGED COUPLINGS, MALE BUSHES & FEMALE BUSHES

SPECIFICATION (All metric threads are ISO 1.5)

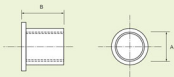


KCDC

– Coupling

A	B
20	33
25	39
32	43

Sizes in millimetres unless otherwise stated.

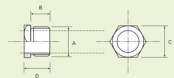


KCDFC

– Flanged Coupling

A	B
20	29
25	35
32	39

Sizes in millimetres unless otherwise stated.

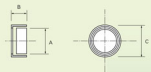


KCDBM

– Male Bush

A	B	C	D
20	13.5	21.5	17.5
25	13.5	27	17.5
32	13.5	34	17.5

Sizes in millimetres unless otherwise stated.



KCDBE

– Female Bush

A	B	C
20	10.5	22
25	12	28
32	16	35

Sizes in millimetres unless otherwise stated.

Stainless Steel Conduit System



STAINLESS STEEL IP66 ADAPTABLE BOXES

Designed to a high specification and manufactured in stainless steel 316, our adaptable boxes will withstand all the rigours of hostile environments and high pressure washdowns.

- * Manufactured in Stainless Steel 316.
- * Hair Line Finish.
- * Pressure Tested.
- * IP66 Tested (Dust & Water Tight).
- * Complete range of sizes.



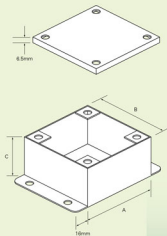
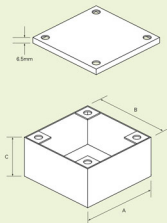
Product Range

Stainless Steel Conduit
Flexible Conduit
IP66 Bore Boxes
Large IP66 Bore Boxes
Distance Saddles
Deep Type Saddles
Mounting Rings
Male & Female Bushes
Lock Nuts & Lock Rings
Reducers, Elbows
Male & Female Bends
Plain & Flanged Couplings
Cable Glands
Adaptable Boxes
Enclosures

Stainless Steel Conduit System

STAINLESS STEEL IP66 ADAPTABLE BOXES

SPECIFICATION (All metric threads are ISO 1.5)



KCAB

- IP66 Adaptable Boxes

All Boxes supplied with Lid & Gasket

A	B	C
75	75	50
75	150	50
100	100	50
150	150	75
225	225	75
300	300	75

Sizes in millimetres unless otherwise stated.

KCAB/E

- IP66 Adaptable Boxes

All Boxes supplied with Lid & Gasket

A	B	C
75	75	50
75	150	50
100	100	50
150	150	75
225	225	75
300	300	75

Sizes in millimetres unless otherwise stated.

Stainless Steel Conduit System

STAINLESS STEEL IP66 WALL MOUNTING ENCLOSURES



The Mounting Enclosures are regularly used in areas susceptible to corrosion and where hygiene is of paramount importance.

Designed to a high specification and manufactured in stainless steel 316, our Enclosures will withstand all the rigours of hostile environments and high pressure washdowns.

- Manufactured in Stainless Steel 316.
- Hair Line Finish.
- Pressure Tested.
- IP66 Tested (Dust & Water Tight).
- Complete range of sizes.



Product Range

Stainless Steel Conduit
Flexible Conduit
IP66 Buss Boxes
Large IP66 Buss Boxes
Distance Saddles
Deep Type Saddles
Monsoon Rings
Male & Female Bushes
Lock Nuts & Lock Rings
Reducers, Elbows
Male & Female Bends
Plain & Flanged Couplings
Cable Glands
Adaptable Boxes
Enclosures

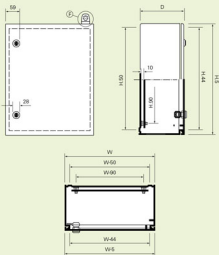
Stainless Steel Conduit System

STAINLESS STEEL IP66 WALL MOUNTING ENCLOSURES

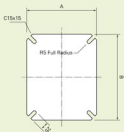
SPECIFICATION *(All metric threads are ISO 1.5)*



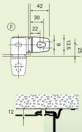
Enclosures



Additional Panel



Wall Fixing Brackets



KSB

- IP66 Wall Mounting Enclosures

- Concealed and easily removable hinges allowing more than 110° opening.
- Hinged door sealed with rubber gaskets.
- Earthing studs fitted on door and body.
- Standard bar lock with wing-shaped handle.
- 4 numbers of flat plate for wall mounting, with Ø10mm hole for M8 fixing.
- Canopies or transparent doors available on request.

Type No.	Dimensions (mm)		
	Width (W)	Height (H)	Depth (D)
KSB202514	200	250	140
KSB253014	250	300	140
KSB253020			200
KSB303014	300	300	140
KSB303020			200
KSB304014	400	400	140
KSB304020			200
KSB405014	400	500	140
KSB405020			200
KSB406014	600	600	140
KSB406020			200
KSB406026			260
KSB506014	500	600	140
KSB506020			200
KSB506026			260
KSB506032			320
KSB507014	700	700	140
KSB507020			200
KSB507026			260
KSB507032			320
KSB608020	600	800	200
KSB608026			260
KSB608032			320
KSB608038			380
KSB6010026	1000	1000	260
KSB6010032			320
KSB6010038			380
KSB6010045			450
KSB8010026	800	1000	260
KSB8010032			320
KSB8010038			380
KSB8010045			450
KSB8012026	1200	1200	260
KSB8012032			320
KSB8012038			380
KSB8012045			450

KSB405020 and Large : 1.5mm grade 316 stainless steel.

Smaller Size : 1.2mm grade 316 stainless steel.

Mounting Plate : 2.0mm zinc plated sheet steel.

Stainless Steel Conduit System



P R O D U C T S I N D E X

Part No.	Item	Page
KCD	Conduit Tube	
KCDMB	Male Bend 90°	5
KCDFB	Female Bend 90°	5
KCD90E	90° Elbow	5
KCD45E	45° Elbow	5
KCDD1	Dome Lid	5
KCDD2	Dome Lid	5
KCD5	Distance Saddle	7
KCDSD	Deep Type Saddle	7
KCDMR	Munson Ring	7
KCDBE/6	IP66 Besa Boxes	9
KCDBS/6	IP66 Besa Boxes	9
KCDBA/6	IP66 Besa Boxes	9
KCDBT/6	IP66 Besa Boxes	9
KCDBC/6	IP66 Besa Boxes	9
KCDBU/6	IP66 Besa Boxes	9
KCDBY/6	IP66 Besa Boxes	9
KCDBH/6	IP66 Besa Boxes	9
KCDBE/8	Large IP66 Besa Boxes	11
KCDBS/8	Large IP66 Besa Boxes	11
KCDBA/8	Large IP66 Besa Boxes	11
KCDBT/8	Large IP66 Besa Boxes	11
KCDBC/8	Large IP66 Besa Boxes	11
KCDBU/8	Large IP66 Besa Boxes	11
KCDBY/8	Large IP66 Besa Boxes	11
KCDBH/8	Large IP66 Besa Boxes	11
KCDLN	Lock Nut	13
KCDLR	Lock Ring	13
KCDN	Nippling	13
KCDPH	Stop Plug	13
KCDPD	Stop Plug	13
KCDSR	Reducer	13
KCDC	Coupling	15
KCDFC	Flanged Coupling	15
KCDBM	Male Bush	15
KCDBF	Female Bush	15
KCAB	IP66 Adaptable Boxes	17
KCAB/F	IP66 Adaptable Boxes	17
KSB	IP66 Wall Mounting Enclosures	19